

# shielded systems

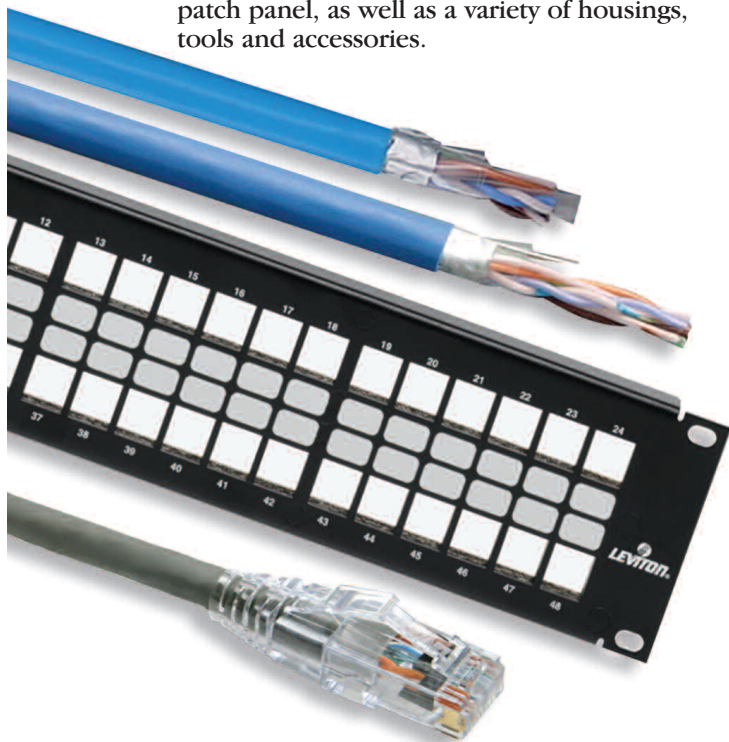
## Category 6, 5E and 5e Systems

Mohawk/Leviton Category 6 Systems deliver long-range multi-gigabit solutions, bridging your networks into the future while establishing the cutting edge in today's copper technology. These Category 6 Systems exceed ANSI/TIA/EIA-568-B.2-1 Category 6 performance requirements, providing usable bandwidth well beyond 250 Mhz.

Our Category 6 solution features Mohawk's cable with Leviton components including shielded connectors, shielded SlimLine® patch cords and shielded patch panels.

Category 5e Systems provide the best combination of performance and price. With risk-free performance and mechanical integrity, these Category 5e Systems exceed ANSI/TIA/EIA-568-B Category 5e requirements for speed, capacity and reliability.

Category 5e solution features Mohawk's MegaLAN® and 5eLAN™ cables combined with Leviton components including Shielded QuickPort® Snap-in Connectors, Shielded QuickPort Patch Panel, Shielded SlimLine Patch Cords and an innovative space-saving angled patch panel, as well as a variety of housings, tools and accessories.



## Category 6 F/UTP System

### Features

- 4-pair Category 6 cable
- Shielded Cat 6 Patch Panel
- Shielded SlimLine Cat 6 Patch Cords
- Shielded Cat 6 Snap-in Connectors

### System Performance

- 1.1 dB Minimum ACR @ 250 MHz
- 2 dB minimum NEXT improvement versus Category 6

- Performance Parameters – Meets TIA/EIA 568-B.2-1 Category 6 and ISO/IEC 11801 Class E requirements
- Installer Friendly Cable Design
  - No special stripping tools
  - Round Design, Flat Tape Separator
  - 1000 to 0 footage marking
  - Bright insulation colors
  - Serial Numbers on every cable for easy identification and labeling
  - Cable tested to 550 MHz

## MegaLAN Category 5E F/UTP System

### Features

- MegaLAN 4-pair Category 5E cable
- Shielded Cat 5e Patch Panel
- Shielded SlimLine Cat 5e Patch Cords
- Shielded Cat 5e Snap-in Connectors

### System Performance

- .20 dB Minimum ACR @ 100 MHz
- 5 dB minimum NEXT improvement versus Category 5e
- Enhanced Performance Parameters – Exceeds TIA/EIA 568-B.2 Category 5e and ISO/IEC Class D requirements

- Installer Friendly Cable Design
  - No special stripping tools
  - 1000 to 0 footage marking
  - Bright insulation colors
  - Serial Numbers on every cable for easy identification and labeling
  - Cable tested to 400 MHz
  - .30 ns/meter Maximum Skew for tightly controlled propagation delay

## 5eLAN Category 5e F/UTP System

### Features

- 5eLAN 4-pair Category 5e cable
- Shielded Cat 5e Patch Panel
- Shielded SlimLine Cat 5e Patch Cords
- Shielded Cat 5e Snap-in Connectors

### System Performance

- 14 dB Minimum ACR @ 100 MHz
- 4 dB minimum NEXT improvement versus Category 5e
- Performance Parameters – Meets TIA/EIA 568-B.2 Category 5e and ISO/IEC Class D requirements

- Installer Friendly Cable Design
  - No special stripping tools
  - 1000 to 0 footage marking
  - Bright insulation colors
  - Serial Numbers on every cable for easy identification and labeling
  - Cable tested to 200 MHz
  - .30 ns/meter Maximum Skew for tightly controlled propagation delay

# Shielded Category 6, 5E and 5e Systems Ordering Information

## Category 6 F/UTP Cable



Color	4 Pair Non-Plenum	Color	4 Pair Plenum
White	M58155	White	M58175
Blue	M58156	Blue	M58176
Pink	M58157	Pink	M58177
Yellow	M58158	Yellow	M58178
Gray	M58159	Gray	M58179
Green	M58160	Green	M58180
Red	M58161	Red	M58181
Orange	M58162	Orange	M58182
Black	M58163	Black	M58183
Violet	M58164	Violet	M58184

## Category 5E F/UTP MegaLAN Cable



Color	4 Pair Non-Plenum	Color	4 Pair Plenum
White	M55987	White	M55986
Blue	M57370	Blue	M57360
Pink	M57371	Pink	M57322
Yellow	M57372	Yellow	M57361
Gray	M57373	Gray	M57362
Green	M57374	Green	M57363
Red	M57375	Red	M57364
Orange	M57376	Orange	M57365
Black	M57377	Black	M57366
Violet	M57378	Violet	M57367

## Category 5e F/UTP 5eLAN Cable



Color	4 Pair Non-Plenum	Color	4 Pair Plenum
White	M58195	White	M58185
Blue	M58196	Blue	M58186
Pink	M58197	Pink	M58187
Yellow	M58198	Yellow	M58188
Gray	M58145	Gray	M58144
Green	M58199	Green	M58189
Red	M58200	Red	M58190
Orange	M58201	Orange	M58191
Black	M58202	Black	M58192
Violet	M58203	Violet	M58193

## Packaging

Cables are available on standard reels or reel-in-a-box. Standard put-ups are 1000 ft, bulk put-ups are also available—please consult the factory.

## Shielded QuickPort® Patch Panels



Description	Part No.
24-Port Flat Shielded Patch Panel, QuickPort, 1 RU (w/out connectors)	4S255-S24
48-Port Flat Shielded Patch Panel, QuickPort, 2 RU (w/out connectors)	4S255-S48
24-Port Angled Shielded Patch Panel, QuickPort, 1 RU (w/out connectors)	4S256-S24
48-Port Angled Shielded Patch Panel, QuickPort, 2 RU (w/out connectors)	4S256-S48

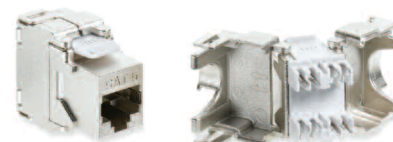
## Shielded SlimLine Patch Cords



Description	Part No.
CAT 5e Shielded Patch Cord	5S460-xxS
CAT 6 Shielded Patch Cord	6S460-xxS

xx = Length: (03), (05), (07), (10), (15), or (20) feet

## Shielded Connectors



Description	Part No.
CAT 5e Shielded Connector	5S180-SH5
CAT 6 Shielded Connector	6S180-SH6

**MOHAWK**  
Cabling Excellence for Open Architecture

800 422 9961 • fax 978 537 4358 • intl 978 537 9961  
www.mohawk-cable.com

**LEVITON**

800 922 6229 • fax 425 485 0112 • intl 425 486 2222  
www.leviton.com

