

Cat 6A systems

Augmented Category 6 System

Mohawk's GigaLAN 10® Augmented Category 6 System is designed to guarantee system operability in meeting increased bandwidth requirements for evolving applications, such as enterprise data centers. Due to extended performance capabilities through unique engineering, this is the cost-effective twisted-pair solution to fiber.

GigaLAN 10 Augmented Category 6 System is fully compatible with the latest draft ANSI/TIA/EIA standard 568-B.2-10, rev 1.4 for 10-Gigabit Ethernet cabling requirements in a 4-conductor, 100 meter channel. It's components feature Mohawk's GigaLAN 10, an Augmented Category 6 unshielded twisted pair (UTP) cable with unique "FlexWeb" construction that isolates the pairs throughout the length of the cable. The innovative patent-pending jacket reduces Alien Crosstalk, while providing an installer-friendly cable. Connectivity from Leviton includes eXtreme® 10G Patch Panels, Patch Cords, and Connectors.

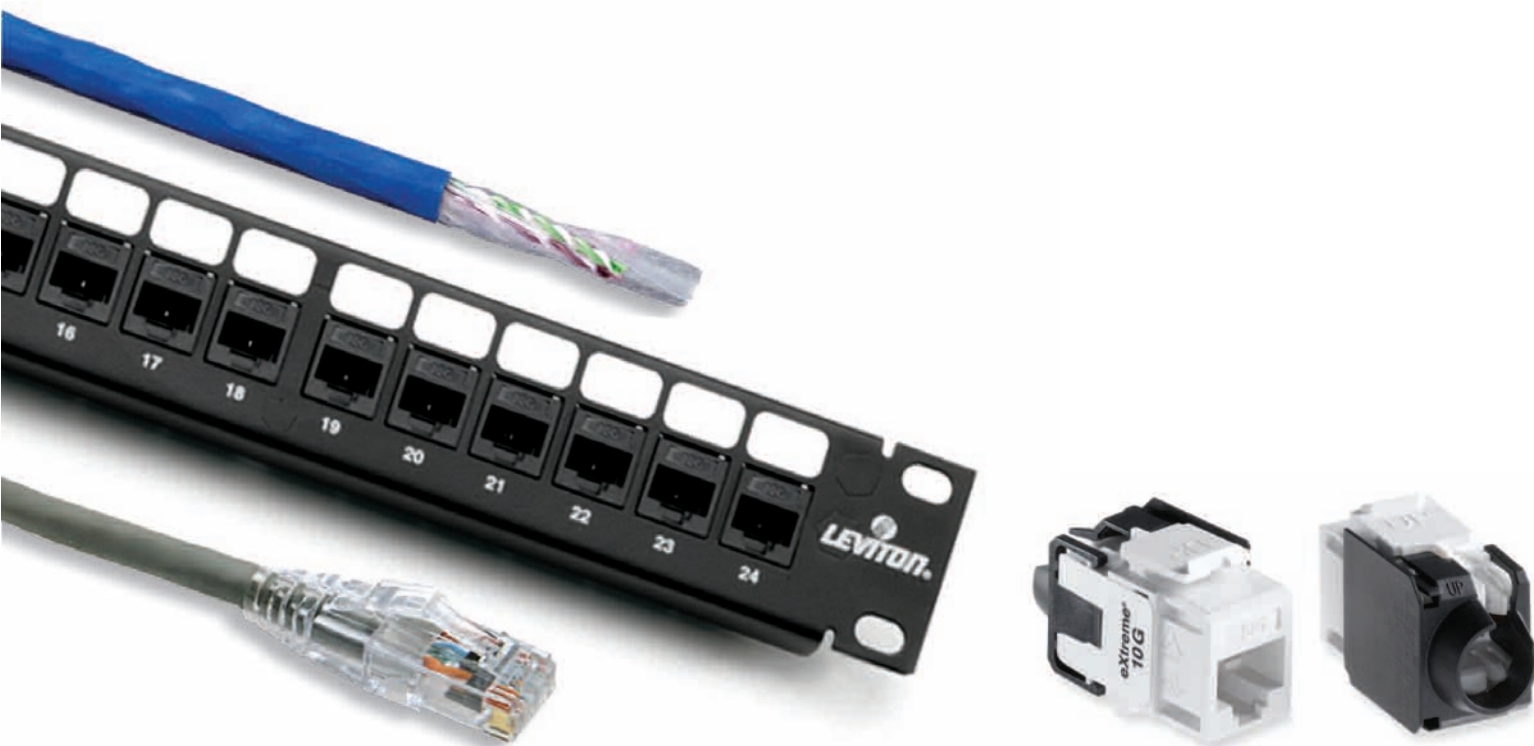
GigaLAN 10 Category 6A System

Features

- GigaLAN 10 Augmented Category 6 UTP with new reduced OD — 4 pr. #23 AWG with "FlexWeb" construction and patent pending jacket
- eXtreme 10G Universal Patch Panels
- SlimLine 10G Patch Cords
- QuickPort® 10G Connectors

Benefits

- Tested to 750 MHz
- Increase in power to 500 MHz due to lower insertion loss characteristics than Category 6
- Guaranteed to exceed current TIA/EIA-568-B.2-10, rev 1.4, 10 Gigabit specifications for AXT, NEXT, FEXT, Insertion Loss and Return Loss, with tested transmission performance
- Guaranteed to meet IEEE 802.3an rev 1.0 standard application requirements



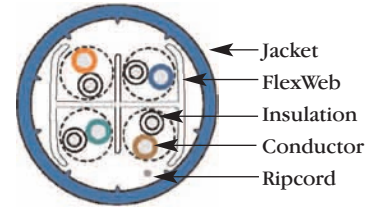
Augmented Cat 6A System Ordering Information

Augmented Category 6 GigaLAN 10 Cable



Mohawk Part No.	Cable Type	Dielectric Type	Jacket Type Diameter		Weight		Listings
			inch	mm	lbs/M'	kg/km	
M58650 Non-Plenum	4 PAIR 23 AWG UTP	Thermoplastic	Blue PVC .295	7.49	45	67	C(UL)US CMR
M58646 Plenum	4 PAIR 23 AWG UTP	FEP	Blue ThermoPlen® .295	7.49	50	74	C(UL)US CMP

*Plenum rated Thermoplastic



Jacket Colors for
4-Pair Non-Plenum

Jacket Color	Mohawk #
White	M58651
Blue	M58650
Yellow	M58652
Gray	M58653

Jacket Colors for
4-Pair Plenum

Jacket Color	Mohawk #
White	M58647
Blue	M58646
Yellow	M58648
Gray	M58649

Packaging

Easybox

The cable is packaged directly in the box and dispenses in a tangle-free payout as if on a reel in 1000 ft. lengths.

Cable Caddy – Reel-in-a-box

The 1000 ft. length of cable is placed on a plastic reel and is dispensed from the front of the Cable Caddy.

Cables are also available on standard 1000 ft. reels.

eXtreme 10G Cat 6A Universal Patch Panels



Description	Part No.
QuickPort CAT 6A 24-Port Flat Patch Panel, 1RU (w/connectors)	6910G-U24
QuickPort CAT 6A 48-Port Flat Patch Panel, 2RU (w/connectors)	6910G-U48
QuickPort 72-Port Flat Patch Panel, 2RU (w/out connectors)	49255-D72
QuickPort 24-Port Angled Patch Panel, 1RU (w/out connectors)	49256-H24
QuickPort 48-Port Angled Patch Panel, 2RU (w/out connectors)	49256-H48
QuickPort 72-Port Angled Patch Panel, 2RU (w/out connectors)	49256-D72
QuickPort CAT 6A 48-Port Recessed Angled Patch Panel, 2RU (w/connectors)	6W10G-U48
QuickPort 72-Port Recessed Angled Patch Panel, 2RU (w/out connectors)	4W256-D72
QuickPort 12-Port VertiGO Vertical Panel, Zero-RU (w/out connectors)	49280-QPO

eXtreme 6A SlimLine Patch Cords #6AS10-XX*



xx = Length: (03), (05), (07), (10), (15) or (20) feet
 * = Patch Cord Colors: (W) white, (Y) yellow, (R) red, (L) blue, (G) green, (S) grey, (E) black

eXtreme 6A QuickPort Connector #6610G-R†6



† = Connector Colors: (W) white, (T) light almond, (A) almond, (I) ivory, (Y) yellow, (O) orange, (C) crimson, (R) dark red, (P) purple, (L) blue, (V) green, (G) grey, (E) black, (B) brown

MOHAWK
Cabling Excellence for Open Architecture

800 422 9961 • fax 978 537 4358 • intl 978 537 9961
www.mohawk-cable.com

LEVITON

800 922 6229 • fax 425 485 0112 • intl 425 486 2222
www.leviton.com

