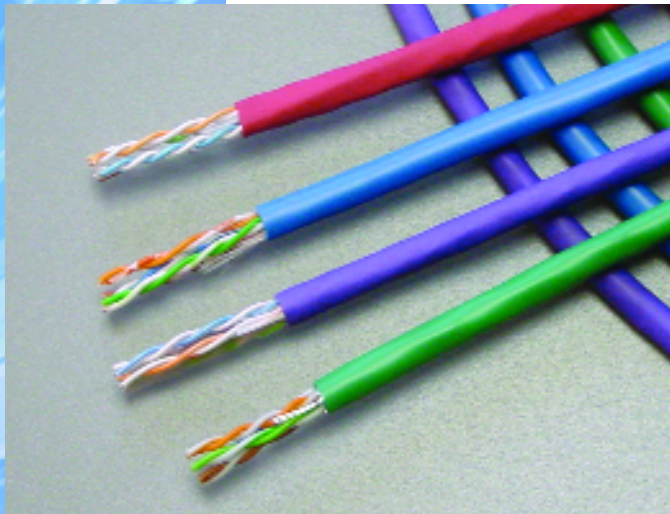




## new product

## Spectrum™

### Low Skew Video Twisted Pair Cable



been traditionally used for RGB applications. The design also keeps the costs down over the standard RGB cables due to the ease of installation and the familiarity contractors have with this type of cabling and its connectivity.

The standard format for transmission of RGB video has been using three separate cables set up to deliver a portion of the signal to be delivered to the destination at the same time to limit any distortion. Spectrum allows this same transmission type over three pairs of a standard UTP data style cable.

The primary benefit is the cable's built-in "low skew". Skew is defined as the difference in signal delay between any pairs in the same cable. The Spectrum cable has a skew of **2.2ns/100m**. This means that all parts of the image being transmitted along the separate pairs of the cable will arrive within 2.2 nanoseconds of each other, ensuring the clearest image on the receiving monitor. The lower the skew, the longer the lengths of cable that can carry the video transmission before experiencing some form of degradation of the image. Spectrum can transmit component type video on lengths of up to **2,000 ft.**

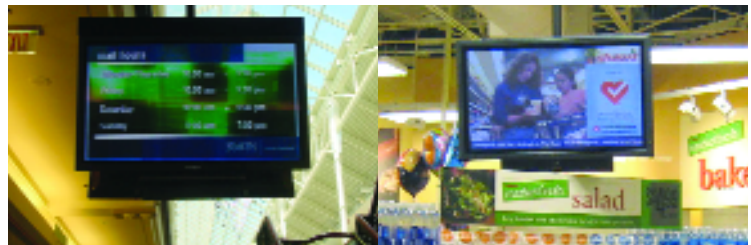
Spectrum is built strictly for the transmission of video and will not support other data-type applications due to the design of the pairs. The cable is made with 24 AWG solid copper and is listed by Underwriters Laboratories as either Plenum (CMP) or Riser (CMR) applications. The Outside Diameter is .185".

For more information call 800-422-9961.

**Video over Twisted Pair cables are a proven cost-effective alternative to coax for RGB video applications such as:**

- Retail Signage • Supermarkets
- Education • Government
- Hospitality • Transportation

With fast growing applications such as digital signage and in-studio video monitoring becoming mainstream, Mohawk has developed an unshielded twisted pair cable as an alternative to coax for RGB (Red, Green, Blue) or component style video broadcasts. The cable consists of a standard "Category" style design using four twisted pairs under one jacket. This allows the cables to be smaller than the standard style coax type cables that have



**MOHAWK**  
Cabling Excellence for Open Architecture

## Frequently Asked Questions about Spectrum™ Low Skew Video Twisted Pair Cables

### Why was it important to develop this product?

The increasing applications of digital signage for marketing and advertising and in-studio video monitoring have been looking for a replacement to bulky and expensive coax-type cabling for RGB or component video transmissions. Additionally, this product supports longer cable runs than are currently available with coax or data cables.

### What features & benefits/advantages does this product bring to the market?

Since Spectrum is a traditional 4-pair data-style cable construction, the technician is already experienced with the installation practice due to the standard connectivity and familiarity of the cabling. The cables can also be hidden via plenums or in walls, as opposed to being visible to customers. Other benefits include a smaller O.D. over coax, longer cable runs and an overall reduction in cost due to all of these factors.

### What markets will this product serve?

The primary market is in Digital Signage, which includes Retail, Education, Banking, Government, Hospitality and Transportation. A secondary market is the broadcast arena for In-Studio Video Monitors.

### What connectors are to be used?

Standard style RJ – 45 connectors should be used.

### What complementary products can be used?

Complementary products include standard RG-6 type coax cables or traditional Category 5 or 6 copper cables (i.e. MegaLAN®, AdvanceNet® and GigaLAN®).

### What literature will be available?

FAQ's, New Product Bulletin, Data Sheet and Sample Packages will be available.

### Product Numbers

Plenum (Maroon) M58814 • Non-Plenum (Maroon) M58813  
Other jacket colors are available.

For product literature or samples, contact Denise Markert at 978-728-5233 or [denise.markert@mohawk-cable.com](mailto:denise.markert@mohawk-cable.com).

For additional product information, please contact your Inside Sales Representative at 800-422-9961.

For technical support, contact Joe Barry at 978-728-5237 or [joe.barry@mohawk-cable.com](mailto:joe.barry@mohawk-cable.com).



**MOHAWK**  
Cabling Excellence for Open Architecture

9 Mohawk Drive, Leominster, MA 01453  
(978) 537-9961 • 1-800-422-9961 • FAX (978) 537-4358  
[info@mohawk-cable.com](mailto:info@mohawk-cable.com) • [www.mohawk-cable.com](http://www.mohawk-cable.com)